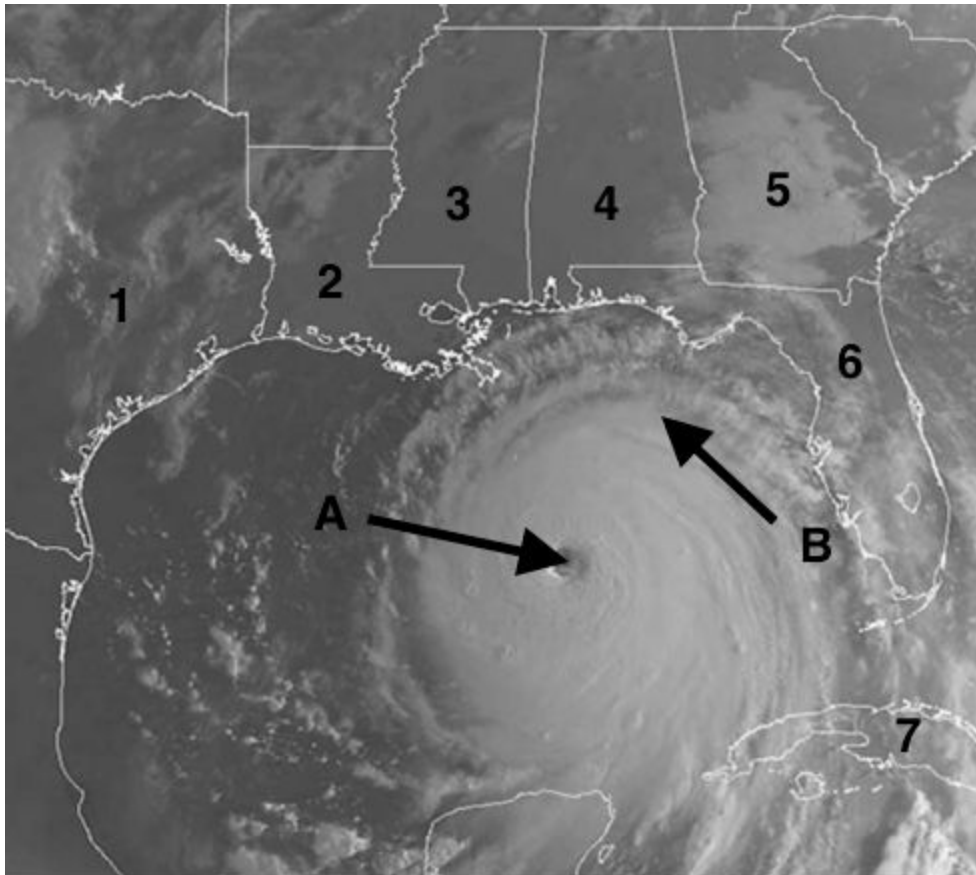


2017 United States Geography Olympiad - Map Skills Examination [SAMPLE]

Section 1



1. What type of storm is shown in the map above? Choose from the following terms to label the parts of the storm marked A and B on the map.

high pressure system, feeder bands, warm ocean current, eye

2. Identify the states numbered 1, 2, 3, 4, 5 and 6 on the map. What island is labeled 7 on the map? Identify the body of water in which this storm is located.

3. In this area of the world, is this type of storm expected to rotate clockwise or counterclockwise?

Section 2



Satellite image of part of South America

1. Identify the area marked A on the map. Briefly explain why this area is the driest non-polar desert in the world.
2. Identify the large body of water marked B on the map. [it is the highest navigable lake in the world] In what mountain range is this lake located?
3. What type of forest is located in the area marked C on the map? What large river flows through the middle of this area? In what country are this river and this biome largely located? [the country is shaded slightly lighter on the map]